

A46 Coventry Junctions (Walsgrave) Scheme Number: TR010066

2.8 Special Category Land Plans

APFP Regulation 5(2)(i)

Planning Act 2008

Infrastructure Planning (Applications: Prescribed Forms
and Procedure) Regulations 2009

Volume 2

November-December 2024

Infrastructure Planning

Planning Act 2008

**The Infrastructure Planning
(Applications: Prescribed Forms and
Procedure) Regulations 2009**

A46 Coventry Junctions (Walsgrave)
Development Consent Order 202[x]

SPECIAL CATEGORY LAND PLANS

Regulation Number	Regulation 5(2)(i)
Planning Inspectorate Scheme Reference	TR010066
Application Document Reference	TR010066/APP/2.8
Author	A46 Coventry Junctions (Walsgrave) Project Team, National Highways

Version	Date	Status of Version
Rev 0	November 2024	Application Issue
<u>Rev 1</u>	<u>December 2024</u>	<u>Updated following Planning Inspectorate advice</u>

CONTENTS

1. Introduction..... 4

1.1. General 4

2. Schedule of Plans Included in this Application Documents..... 5

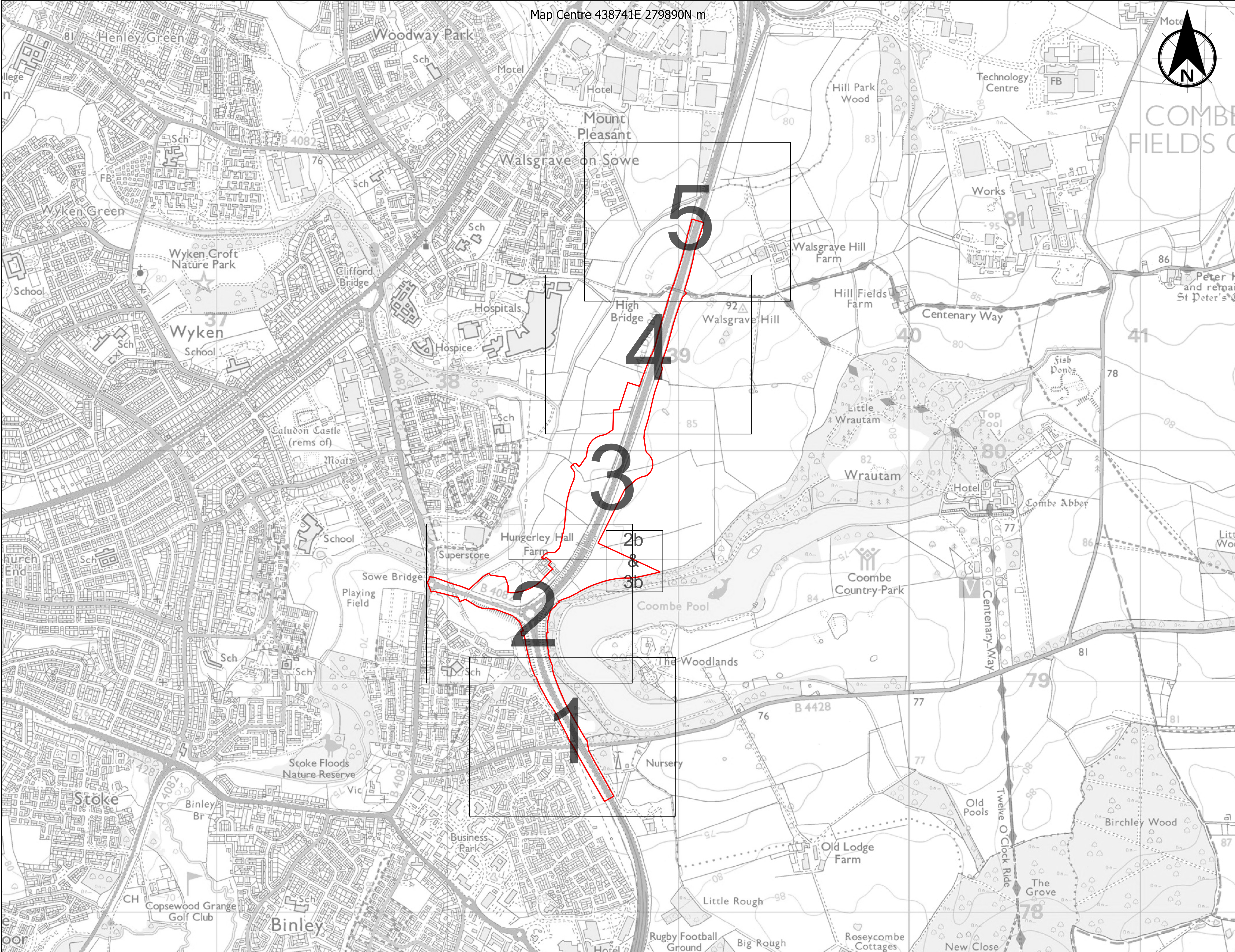
1. Introduction

1.1. General

- 1.1.1. These Special Category Land Plans (these “Plans”) relate to an application made by National Highways (the “Applicant”) to the Secretary of State for Transport via the Planning Inspectorate (the “Inspectorate”) under the Planning Act 2008 (the “2008 Act”) for a Development Consent Order (DCO). If made, the DCO would grant consent for the A46 Coventry Junctions (Walsgrave) Scheme (the “Scheme”). A detailed description of the Scheme can be found in Chapter 2 (The Scheme) of the Environmental Statement (ES) (**TR010066/APP/6.1**).
- 1.1.2. These Plans are included in the Application to comply with Regulation 5(2)(i)(iv) of the Infrastructure Planning (Applications: Prescribed Forms and Procedures) Regulations 2009 (the “2009 Regulations”), which require:
- 5(2)(i) “a land plan identifying’*
- (iv) where the land includes special category land and replacement land, that special category and replacement land”*
- 1.1.3. These Plans are also being submitted under Regulation 5(4) of the 2009 Regulations which states;
- 5(4) “Where a plan comprises three or more separate sheets a key plan must be provided showing the relationship between the different sheets.”*
- 1.1.4. This set of Plans specifically identifies the special category land within the Order Limits. The land within the Order Limits includes land that is open space, this being a type of land that fall within the definition of special category land. These plans identify this land which is proposed to be used via temporary possession for the construction of the Scheme.
- 1.1.5. In this plan set “the Order limits” means the “limits of land to be acquired or used permanently or temporarily within which the authorised development may be carried out.
- 1.1.6. As these Plans are part of the Application documentation they should be read alongside and are informed by the other Application Documents, in particular Schedule 1 of the draft DCO (**TR010066/APP/3.1**).

2. Schedule of Plans Included in this Application Documents

Drawing Number	Drawing Title	Version
TR010066/APP/2.8	Special Category Land Plans – Key Plan	P01
TR010066/APP/2.8	Special Category Land Plans – Sheet 1 of 5	P0 2 ⁴
TR010066/APP/2.8	Special Category Land Plans – Sheet 2 of 5	P0 2 ⁴
TR010066/APP/2.8	Special Category Land Plans – Sheet 3 of 5	P01
TR010066/APP/2.8	Special Category Land Plans – Sheet 4 of 5	P01
TR010066/APP/2.8	Special Category Land Plans – Sheet 5 of 5	P01



Map Centre 438741E 279890N m

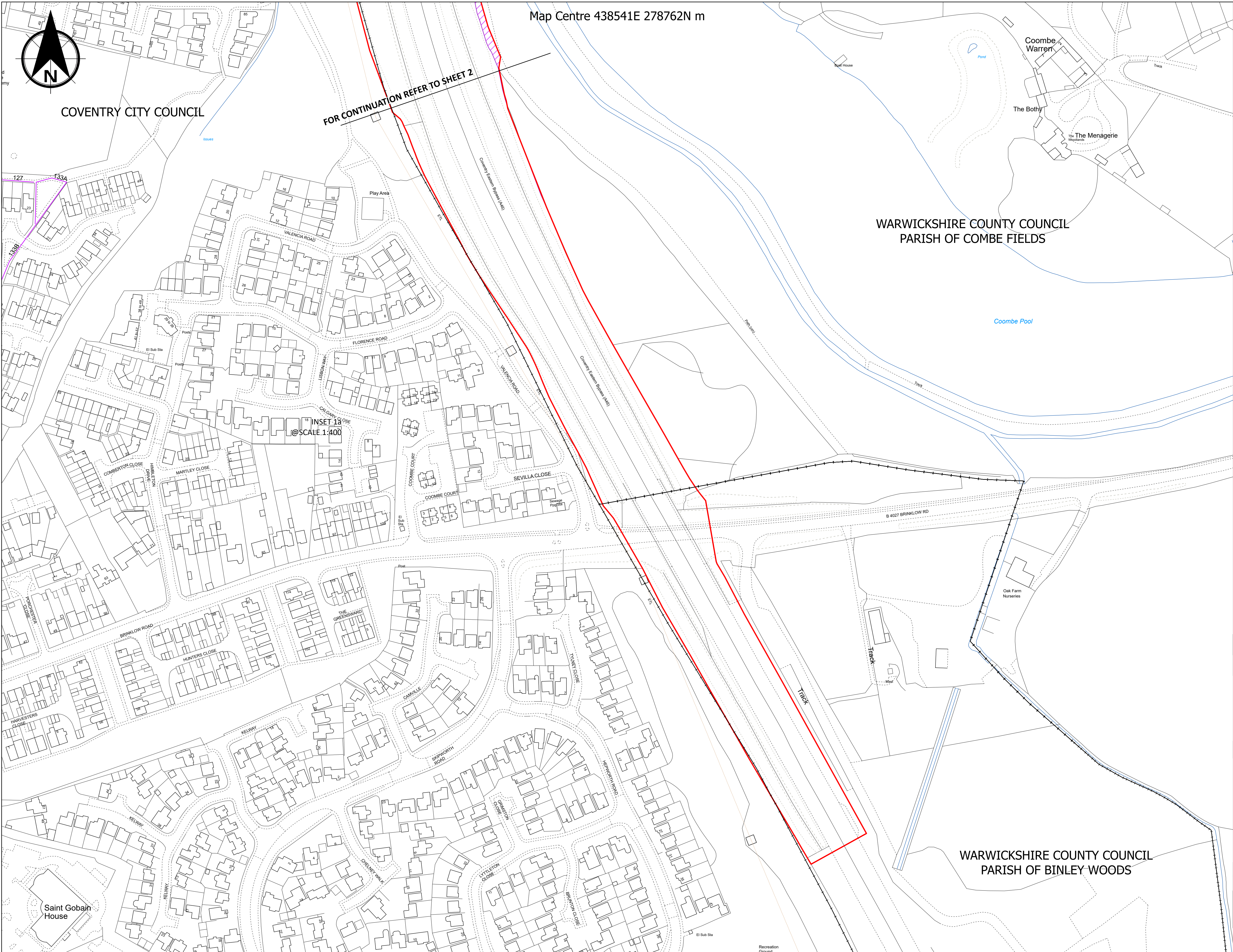


NOTES:
1. ALL DIMENSIONS ARE IN METRES UNLESS STATED OTHERWISE.
2. ALL EASEMENTS, SERVITUDES AND PRIVATE RIGHTS ARE PROPOSED TO BE EXTINGUISHED ON LAND, COLOURED PINK ON THESE LAND PLANS UNLESS STATED OTHERWISE IN THE BOOK OF REFERENCE. ALL EASEMENTS, SERVITUDES AND PRIVATE RIGHTS ARE PROPOSED TO BE EXTINGUISHED, SO FAR AS THEIR CONTINUED EXERCISE WOULD BE INCONSISTENT WITH THE EXERCISE OF THE RIGHTS AND RESTRICTIONS PROPOSED TO BE ACQUIRED BY THE UNDERTAKER ON LAND COLOURED BLUE ON THESE LAND PLANS UNLESS STATED OTHERWISE IN THE BOOK OF REFERENCE. ALL EASEMENTS, SERVITUDES AND PRIVATE RIGHTS ARE PROPOSED TO BE SUSPENDED WHILE THE UNDERTAKER IS IN TEMPORARY POSSESSION OF THE LAND COLOURED GREEN ON THESE LAND PLANS UNLESS STATED OTHERWISE IN THE BOOK OF REFERENCE.
3. THIS DRAWING IS TO BE READ IN CONJUNCTION WITH ALL OTHER PLANS AND DOCUMENTATION, IN PARTICULAR THE WORKS PLANS AND THE BOOK OF REFERENCE.

Legend

- PROPOSED SCHEME BOUNDARY
- 1 SHEET NUMBER

Revision 1		By SC	LE	08/11/2024	P01
Revision Details		By	Check	Date	Suffix
Purpose of Issue: DCO APPLICATION					
Client: National Highways					
					
Development Consent Order Number: TR010066					
Project Title: A46 COVENTRY JUNCTIONS (WALSGRAVE)					
Development Consent Order Drawing Number: TR010066/APP/2.8					
Drawing Title: SPECIAL CATEGORY LAND PLANS REGULATION 5(2)(i) KEY PLAN					
Designed: --	Drawn: SC	Checked: LE	Date: 08/11/2024		
Internal Project Number: J0072785-24-00b		Suitability: DCO Application			
Scale @ A3: 1:7,500		Zone: Whole Site			
		Rev: P01			
<div><div></div><div></div><div></div><div></div><div></div><div></div><div></div><div></div><div></div><div></div><div></div><div></div><div></div><div></div><div></div><div></div><div></div><div></div><div></div><div></div><div></div><div></div><div></div><div></div><div></div><div></div><div></div><div></div><div></div><div></div><div></div><div></div><div></div><div></div><div></div><div></div><div></div><div></div><div></div><div></div><div></div><div></div><div></div><div></div><div></div><div></div><div></div><div></div><div></div><div></div><div></div><div></div><div></div><div></div><div></div><div></div><div></div><div></div><div></div><div></div><div></div><div></div><div></div><div></div><div></div><div></div><div></div><div></div><div></div><div></div><div></div><div></div><div></div><div></div><div></div><div></div><div></div><div></div><div></div><div></div><div></div><div></div><div></div><div></div><div></div><div></div><div></div><div></div><div></div><div></div><div></div><div></div><div></div><div></div><div></div><div></div><div></div><div></div><div></div><div></div><div></div><div></div><div></div><div></div><div></div><div></div><div></div><div></div><div></div><div></div><div></div><div></div><div></div><div></div><div></div><div></div><div></div><div></div><div></div><div></div><div></div><div></div><div></div><div></div><div></div><div></div><div></div><div></div><div></div><div></div><div></div><div></div><div></div><div></div><div></div><div></div><div></div><div></div><div></div><div></div><div></div><div></div><div></div><div></div><div></div><div></div><div></div><div></div><div></div><div></div><div></div><div></div><div></div><div></div><div></div><div></div><div></div><div></div><div></div><div></div><div></div><div></div><div></div><div></div><div></div><div></div><div></div><div></div><div></div><div></div><div></div><div></div><div></div><div></div><div></div><div></div><div></div><div></div><div></div><div></div><div></div><div></div><div></div><div></div><div></div><div></div><div></div><div></div><div></div><div></div><div></div><div></div><div></div><div></div><div></div><div></div><div></div><div></div><div></div><div></div><div></div><div></div><div></div><div></div><div></div><div></div><div></div><div></div><div></div><div></div><div></div><div></div><div></div><div></div><div></div><div></div><div></div><div></div><div></div><div></div><div></div><div></div><div></div><div></div><div></div><div></div><div></div><div></div><div></div><div></div><div></div><div></div><div></div><div></div><div></div><div></div><div></div><div></div><div></div><div></div><div></div><div></div><div></div><div></div><div></div><div></div><div></div><div></div><div></div><div></div><div></div><div></div><div></div><div></div><div></div><div></div><div></div><div></div><div></div><div></div><div></div><div></div><div></div><div></div><div></div><div></div><div></div><div></div><div></div><div></div><div></div><div></div><div></div><div></div><div></div><div></div><div></div><div></div><div></div><div></div><div></div><div></div><div></div><div></div><div></div><div></div><div></div><div></div><div></div><div></div><div></div><div></div><div></div><div></div><div></div><div></div><div></div><div></div><div></div><div></div><div></div><div></div><div></div><div></div><div></div><div></div><div></div><div></div><div></div><div></div><div></div><div></div><div></div><div></div><div></div><div></div><div></div><div></div><div></div><div></div><div></div><div></div><div></div><div></div><div></div><div></div><div></div><div></div><div></div><div></div><div></div><div></div><div></div><div></div><div></div><div></div><div></div><div></div><div></div><div></div><div></div><div></div><div></div><div></div><div></div><div></div><div></div><div></div><div></div><div></div><div></div><div></div><div></div><div></div><div></div><div></div><div></div><div></div><div></div><div></div><div></div><div></div><div></div><div></div><div></div><div></div><div></div><div></div><div></div><div></div><div></div><div></div><div></div><div></div><div></div><div></div><div></div><div></div><div></div><div></div><div></div><div></div><div></div><div></div><div></div><div></div><div></div><div></div><div></div><div></div><div></div><div></div><div></div><div></div><div></div><div></div><div></div><div></div><div></div><div></div><div></div><div></div><div></div><div></div><div></div><div></div><div></div><div></div><div></div><div></div><div></div><div></div><div></div><div></div><div></div><div></div><div></div><div></div><div></div><div></div><div></div><div></div><div></div><div></div><div></div><div></div><div></div><div></div><div></div><div></div><div></div><div></div><div></div><div></div><div></div><div></div><div></div><div></div><div></div><div></div><div></div><div></div><div></div><div></div><div></div><div></div><div></div><div></div><div></div><div></div><div></div><div></div><div></div><div></div><div></div><div></div><div></div><div></div><div></div><div></div><div></div><div></div><div></div><div></div><div></div><div></div><div></div><div></div><div></div><div></div><div></div><div></div><div></div><div></div><div></div><div></div><div></div><div></div><div></div><div></div><div></div><div></div><div></div><div></div><div></div><div></div><div></div><div></div><div></div><div></div><div></div><div></div><div></div><div></div><div></div><div></div><div></div><div></div><div></div><div></div><div></div><div></div><div></div><div></div><div></div><div></div><div></div><div></div><div></div><div></div><div></div><div></div><div></div><div></div><div></div><div></div><div></div><div></div><div></div><div></div><div></div><div></div><div></div><div></div><div></div><div></div><div></div><div></div><div></div><div></div><div></div><div></div><div></div><div></div><div></div><div></div><div></div><div></div><div></div><div></div><div></div><div></div><div></div><div></div><div></div><div></div><div></div><div></div><div></div><div></div><div></div><div></div><div></div><div></div><div></div><div></div><div></div><div></div><div></div><div></div><div></div><div></div><div></div><div></div><div></div><div></div><div></div><div></div><div></div><div></div><div></div><div></div><div></div><div></div><div></div><div></div><div></div><div></div><div></div><div></div><div></div><div></div><div></div><div></div><div></div><div></div><div></div><div></div><div></div><div></div><div></div><div></div><div></div><div></div><div></div><div></div><div></div><div></div><div></div><div></div><div></div><div></div><div></div><div></div><div></div><div></div><div></div><div></div><div></div><div></div><div></div><div></div><div></div><div></div><div></div><div></div><div></div><div></div><div></div><div></div><div></div><div></div><div></div><div></div><div></div><div></div><div></div><div></div><div></div><div></div><div></div><div></div><div></div><div></div><div></div><div></div><div></div><div></div><div></div><div></div><div></div><div></div><div></div><div></div><div></div><div></div><div></div><div></div><div></div><div></div><div></div><div></div><div></div><div></div><div></div><div></div><div></div><div></div><div></div><div></div><div></div><div></div><div></div><div></div><div></div><div></div><div></div><div></div><div></div><div></div><div></div><div></div><div></div><div></div><div></div><div></div><div></div><div></div><div></div><div></div><div></div><div></div><div></div><div></div><div></div><div></div><div></div><div></div><div></div><div></div><div></div><div></div><div></div><div></div><div></div><div></div><div></div><div></div><div></div><div></div><div></div><div></div><div></div><div></div><div></div><div></div><div></div><div></div><div></div><div></div><div></div><div></div><div></div><div></div><div></div><div></div><div></div><div></div><div></div><div></div><div></div><div></div><div></div><div></div><div></div><div></div><div></div><div></div><div></div><div></div><div></div><div></div><div></div><div></div><div></div><div></div><div></div><div></div><div></div><div></div><div></div><div></div><div></div><div></div><div></div><div></div><div></div><div></div><div></div><div></div><div></div><div></div><div></div><div></div><div></div><div></div><div></div><div></div><div></div><div></div><div></div><div></div><div></div><div></div><div></div><div></div><div></div><div></div><div></div><div></div><div></div><div></div><div></div><div></div><div></div><div></div><div></div><div></div><div></div><div></div><div></div><div></div><div></div><div></div><div></div><div></div><div></div><div></div><div></div><div></div><div></div><div></div><div></div><div></div><div></div><div></div><div></div><div></div><div></div><div></div><div></div><div></div><div></div><div></div><div></div><div></div><div></div><div></div><div></div><div></div><div></div><div></div><div></div><div></div><div></div><div></div><div></div><div></div><div></div><div></div><div></div><div></div><div></div><div></div><div></div><div></div><div></div><div></div><div></div><div></div><div></div><div></div><div></div><div></div><div></div><div></div><div></div><div></div><div></div><div></div><div></div><div></div><div></div><div></div><div></div><div></div><div></div><div></div><div></div><div></div><div></div><div></div><div></div><div></div><div></div><div></div><div></div><div></div><div></div><div></div><div></div><div></div><div></div><div></div><div></div><div></div><div></div><div></div><div></div><div></div><div></div><div></div><div></div><div></div><div></div><div></div><div></div><div></div><div></div><div></div><div></div><div></div><div></div><div></div><div></div><div></div><div></div><div></div><div></div><div></div><div></div><div></div><div></div><div></div><div></div><div></div><div></div><div></div><div></div><div></div><div></div><div></div><div></div><div></div><div></div><div></div><div></div><div></div><div></div><div></div><div></div><div></div><div></div><div></div><div></div><div></div><div></div><div></div><div></div><div></div><div></div><div></div><div></div><div></div><div></div><div></div><div></div><div></div><div></div><div></div><div></div><div></div><div></div><div></div><div></div><div></div><div></div><div></div><div></div><div></div><div></div><div></div><div></div><div></div><div></div><div></div><div></div><div></div><div></div><div></div><div></div><div></div><div></div><div></div><div></div><div></div><div></div><div></div><div></div><div></div><div></div><div></div><div></div><div></div><div></div><div></div><div></div><div></div><div></div><div></div><div></div><div></div><div></div><div></div><div></div><div></div><div></div><div></div><div></div><div></div><div></div><div></div><div></div><div></div><div></div><div></div><div></div><div></div><div></div><div></div><div></div><div></div><div></div><div></div><div></div><div></div><div></div><div></div><div></div><div></div><div></div><div></div><div></div><div></div><div></div><div></div><div></div><div></div><div></div><div></div><div></div><div></div><div></div><div></div><div></div><div></div><div></div><div></div><div></div><div></div><div></div><div></div><div></div><div></div><div></div><div></div><div></div><div></div><div></div><div></div><div></div><div></div><div></div><div></div><div></div><div></div><div></div><div></div><div></div><div></div><div></div><div></div><div></div><div></div><div></div><div></div><div></div><div></div><div></div><div></div><div></div><div></div><div></div><div></div><div></div><div></div><div></div><div></div><div></div><div></div><div></div><div></div><div></div><div></div><div></div><div></div><div></div><div></div><div></div><div></div><div></div><div></div><div></div><div></div><div></div><div></div><div></div><div></div><div></div><div></div><div></div><div></div><div></div><div></div><div></div><div></div><div></div><div></div><div></div><div></div><div></div><div></div><div></div><div></div><div></div><div></div><div></div><div></div><div></div><div></div><div></div><div></div><div></div><div></div><div></div><div></div><div></div><div></div><div></div><div></div><div></div><div></div><div></div><div></div><div></div><div></div><div></div><div></div><div></div><div></div><div></div><div></div><div></div><div></div><div></div><div></div><div></div><div></div><div></div><div></div><div></div><div></div><div></div><div></div><div></div><div></div><div></div><div></div><div></div><div></div><div></div><div></div><div></div><div></div><div></div><div></div><div></div><div></div><div></div><div></div><div></div><div></div><div></div><div></div><div></div><div></div><div></div><div></div><div></div><div></div><div></div><div></div><div></div><div></div><div></div><div></div><div></div><div></div><div></div><div></div><div></div><div></div><div></div><div></div><div></div><div></div><div></div><div></div><div></div><div></div><div></div><div></div><div></div><div></div><div></div><div></div><div></div><div></div><div></div><div></div><div></div><div></div><div></div><div></div><div></div><div></div><div></div><div></div><div></div><div></div><div></div><div></div><div></div><div></div><div></div><div></div><div></div><div></div><div></div><div></div><div></div><div></div><div></div><div></div><div></div><div></div><div></div><div></div><div></div><div></div><div></div><div></div><div></div><div></div><div></div><div></div><div></div><div></div><div></div><div></div><div></div><div></div><div></div><div></div><div></div></div>					




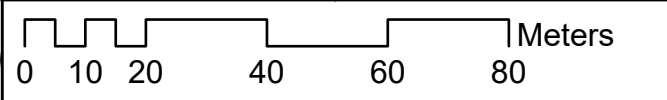
NOTES:

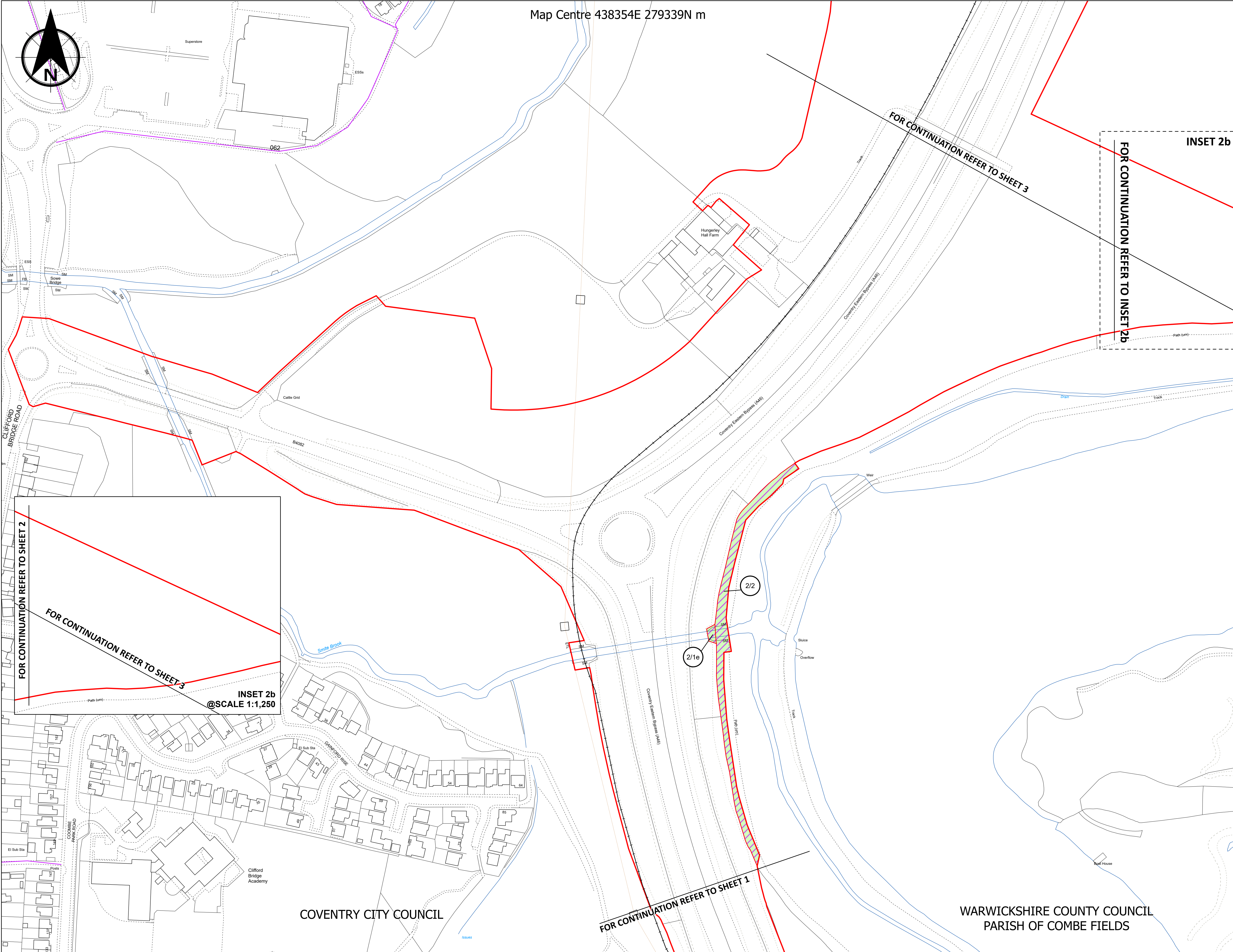
1. ALL DIMENSIONS ARE IN METRES UNLESS STATED OTHERWISE.

2. ALL EASEMENTS, SERVITUDES AND PRIVATE RIGHTS ARE PROPOSED TO BE EXTINGUISHED ON LAND, COLOURED PINK ON THESE LAND PLANS UNLESS STATED OTHERWISE IN THE BOOK OF REFERENCE. ALL EASEMENTS, SERVITUDES AND PRIVATE RIGHTS ARE PROPOSED TO BE EXTINGUISHED, SO FAR AS THEIR CONTINUED EXERCISE WOULD BE INCONSISTENT WITH THE EXERCISE OF THE RIGHTS AND RESTRICTIONS PROPOSED TO BE ACQUIRED BY THE UNDERTAKER ON LAND COLOURED BLUE ON THESE LAND PLANS UNLESS STATED OTHERWISE IN THE BOOK OF REFERENCE. ALL EASEMENTS, SERVITUDES AND PRIVATE RIGHTS ARE PROPOSED TO BE SUSPENDED WHILE THE UNDERTAKER IS IN TEMPORARY POSSESSION OF THE LAND COLOURED GREEN ON THESE LAND PLANS UNLESS STATED OTHERWISE IN THE BOOK OF REFERENCE.

3. THIS DRAWING IS TO BE READ IN CONJUNCTION WITH ALL OTHER PLANS AND DOCUMENTATION, IN PARTICULAR THE WORKS PLANS AND THE BOOK OF REFERENCE.

- Legend**
- DRAFT ORDER LIMITS
 - EXISTING PUBLIC RIGHTS OF WAY (ENGLAND)
 - PLOT REFERENCE NUMBER
 - LOCAL AUTHORITY BOUNDARY
 - SPECIAL CATAGORY LAND (OPEN SPACE)

Revision 1	By SC	LE	08/11/2024	P01
Revision 2	By SC	LE	17/12/2024	P02
Revision Details	By	Check	Date	Suffix
Purpose of Issue: DCO APPLICATION				
Client: National Highways 				
Development Consent Order Number: TR010066				
Project Title: A46 COVENTRY JUNCTIONS (WALSGRAVE)				
Development Consent Order Drawing Number: TR010066/APP/2.8				
Drawing Title: SPECIAL CATEGORY LAND PLANS REGULATION 5(2)(i) SHEET 1 OF 5				
Designed: --	Drawn: SC	Checked: LE	Date: 17/12/2024	
Internal Project Number: J0072785-24-01c		Suitability: DCO Application		
Scale @ A3: 1:1,250		Zone: Whole Site		
		Rev: P02		
				



NOTES:


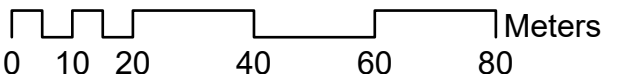
1. ALL DIMENSIONS ARE IN METRES UNLESS STATED OTHERWISE.

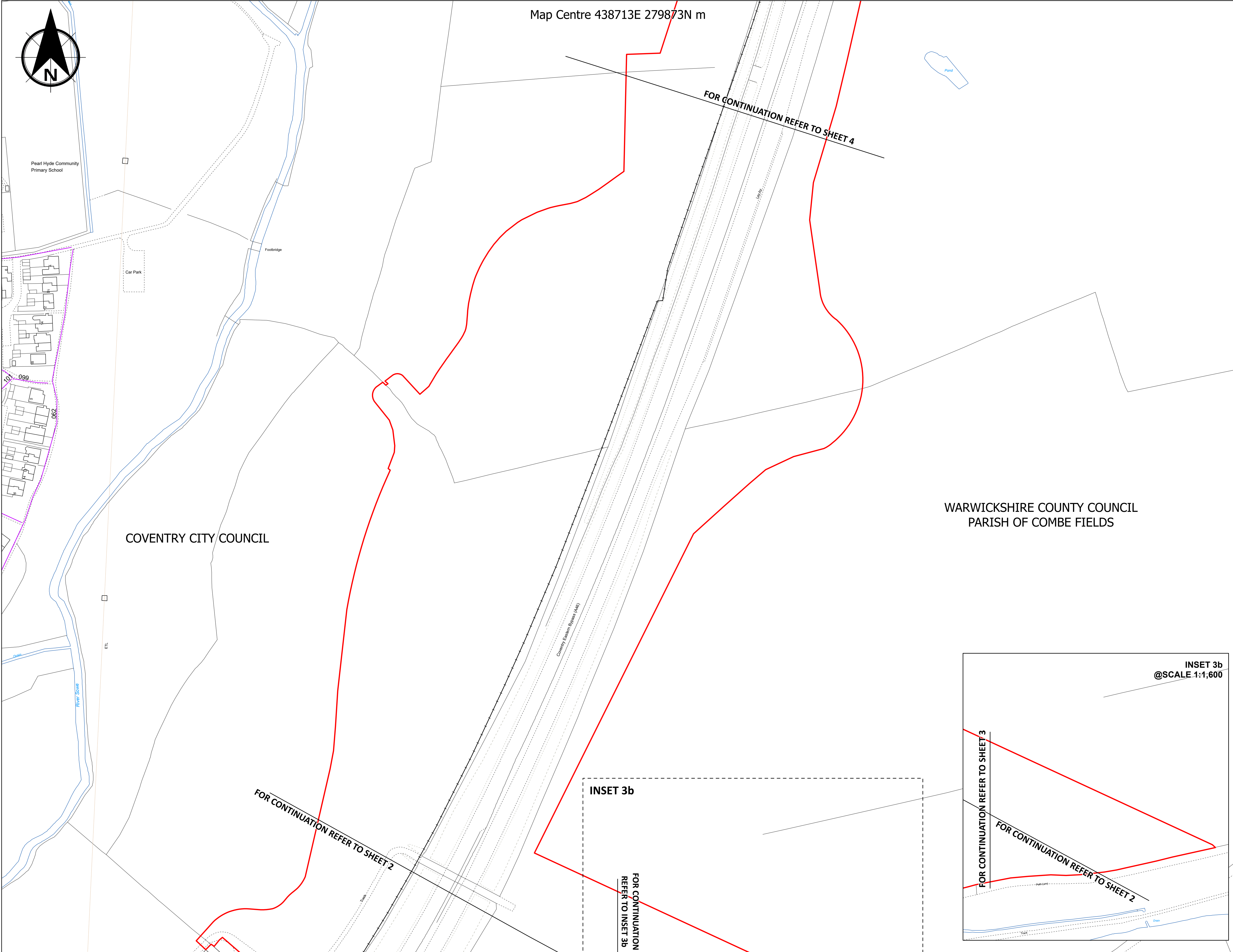
2. ALL EASEMENTS, SERVITUDES AND PRIVATE RIGHTS ARE PROPOSED TO BE EXTINGUISHED ON LAND, COLOURED PINK ON THESE LAND PLANS UNLESS STATED OTHERWISE IN THE BOOK OF REFERENCE. ALL EASEMENTS, SERVITUDES AND PRIVATE RIGHTS ARE PROPOSED TO BE EXTINGUISHED, SO FAR AS THEIR CONTINUED EXERCISE WOULD BE INCONSISTENT WITH THE EXERCISE OF THE RIGHTS AND RESTRICTIONS PROPOSED TO BE ACQUIRED BY THE UNDERTAKER ON LAND COLOURED BLUE ON THESE LAND PLANS UNLESS STATED OTHERWISE IN THE BOOK OF REFERENCE. ALL EASEMENTS, SERVITUDES AND PRIVATE RIGHTS ARE PROPOSED TO BE SUSPENDED WHILE THE UNDERTAKER IS IN TEMPORARY POSSESSION OF THE LAND COLOURED GREEN ON THESE LAND PLANS UNLESS STATED OTHERWISE IN THE BOOK OF REFERENCE.

3. THIS DRAWING IS TO BE READ IN CONJUNCTION WITH ALL OTHER PLANS AND DOCUMENTATION, IN PARTICULAR THE WORKS PLANS AND THE BOOK OF REFERENCE.

- Legend**
- DRAFT ORDER LIMITS
 - EXISTING PUBLIC RIGHTS OF WAY (ENGLAND)
 - PLOT REFERENCE NUMBER
 - LOCAL AUTHORITY BOUNDARY
 - LAND TO BE USED TEMPORARILY AND RIGHTS TO BE ACQUIRED PERMANENTLY
 - LAND TO BE ACQUIRED PERMANENTLY
 - LAND TO BE USED TEMPORARILY
 - SPECIAL CATAGORY LAND (OPEN SPACE)

Revision 1	By SC	LE	08/11/2024	P01
Revision 2	By SC	LE	17/12/2024	P02
Revision Details	By	Check	Date	Suffix

Revision 1		By SC LE	08/11/2024	P01
Revision 2		By SC LE	17/12/2024	P02
Revision Details		By Check	Date	Suffix
Purpose of Issue: DCO APPLICATION				
Client: National Highways 				
Development Consent Order Number: TR010066				
Project Title: A46 COVENTRY JUNCTIONS (WALSGRAVE)				
Development Consent Order Drawing Number: TR010066/APP/2.8				
Drawing Title: SPECIAL CATEGORY LAND PLANS REGULATION 5(2)(I) SHEET 2 OF 5				
Designed: --		Drawn: SC		Checked: LE
Internal Project Number: J0072785-24-02b		Suitability: DCO Application		Date: 17/12/2024
Scale @ A3: 1:1,250		Zone: Whole Site		
		Rev: P02		
 Meters				



NOTES:

1. ALL DIMENSIONS ARE IN METRES UNLESS STATED OTHERWISE.

2. ALL EASEMENTS, SERVITUDES AND PRIVATE RIGHTS ARE PROPOSED TO BE EXTINGUISHED ON LAND, COLOURED PINK ON THESE LAND PLANS UNLESS STATED OTHERWISE IN THE BOOK OF REFERENCE. ALL EASEMENTS, SERVITUDES AND PRIVATE RIGHTS ARE PROPOSED TO BE EXTINGUISHED, SO FAR AS THEIR CONTINUED EXERCISE WOULD BE INCONSISTENT WITH THE EXERCISE OF THE RIGHTS AND RESTRICTIONS PROPOSED TO BE ACQUIRED BY THE UNDERTAKER ON LAND COLOURED BLUE ON THESE LAND PLANS UNLESS STATED OTHERWISE IN THE BOOK OF REFERENCE. ALL EASEMENTS, SERVITUDES AND PRIVATE RIGHTS ARE PROPOSED TO BE SUSPENDED WHILE THE UNDERTAKER IS IN TEMPORARY POSSESSION OF THE LAND COLOURED GREEN ON THESE LAND PLANS UNLESS STATED OTHERWISE IN THE BOOK OF REFERENCE.

3. THIS DRAWING IS TO BE READ IN CONJUNCTION WITH ALL OTHER PLANS AND DOCUMENTATION, IN PARTICULAR THE WORKS PLANS AND THE BOOK OF REFERENCE.

Legend

- DRAFT ORDER LIMITS
- EXISTING PUBLIC RIGHTS OF WAY (ENGLAND)
- ⊙ PLOT REFERENCE NUMBER
- LOCAL AUTHORITY BOUNDARY

Revision 1	By SC	LE	08/11/2024	P01
Revision Details	By	Check	Date	Suffix

Purpose of Issue: DCO APPLICATION

Client: National Highways

Development Consent Order Number: TR010066

Project Title: A46 COVENTRY JUNCTIONS (WALSGRAVE)

Development Consent Order Drawing Number: TR010066/APP/2.8

Drawing Title: SPECIAL CATEGORY LAND PLANS
REGULATION 5(2)(i)
SHEET 3 OF 5

Designed: SC	Drawn: LE	Checked: LE	Date: 08/11/2024
--------------	-----------	-------------	------------------

Internal Project Number: J0072785-24-03b

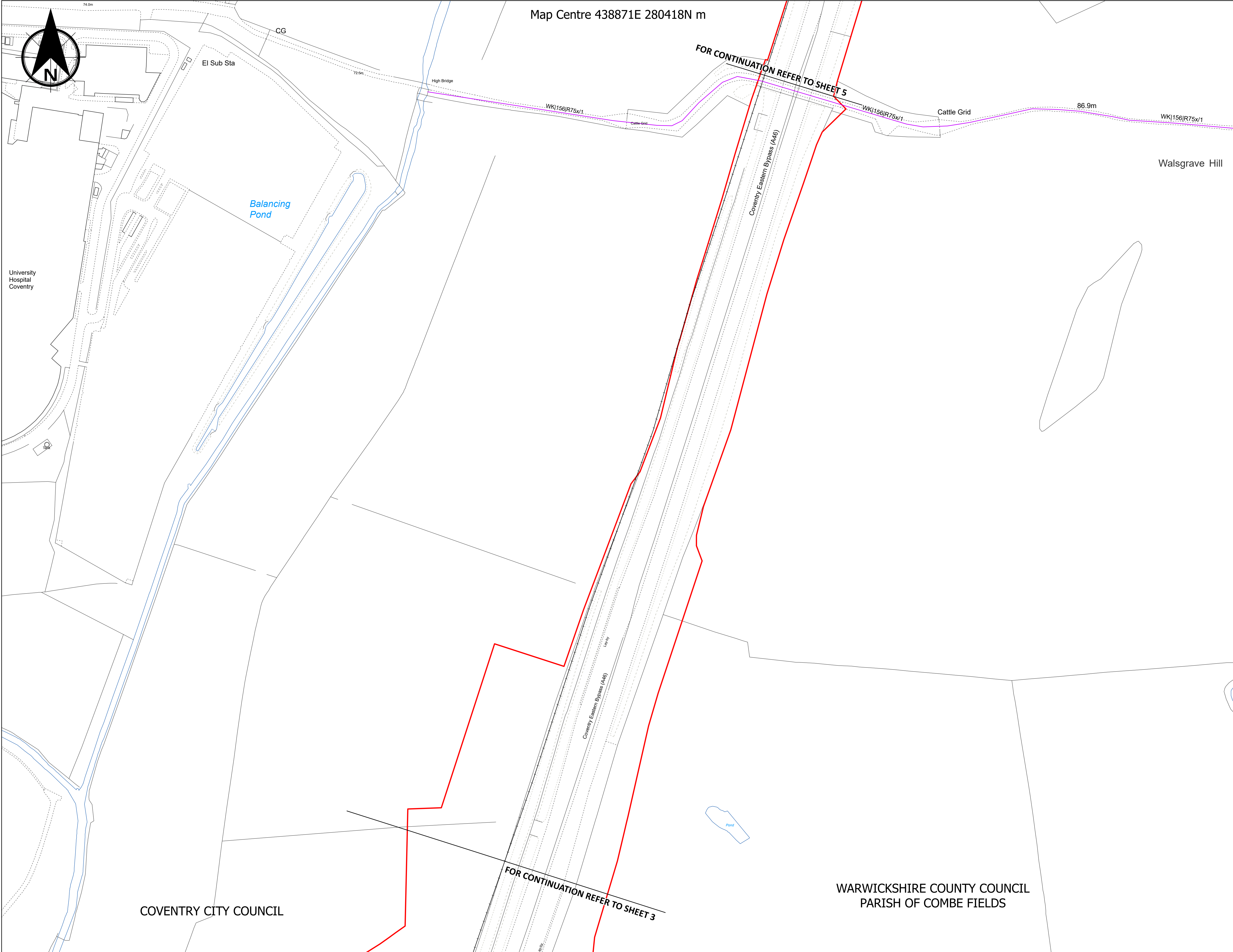
Scale @ A3: 1:1,250

Suitability: DCO Submission

Zone: Whole Site

Rev: P01

0 10 20 40 60 80 Meters



Map Centre 438871E 280418N m



NOTES:

1. ALL DIMENSIONS ARE IN METRES UNLESS STATED OTHERWISE.

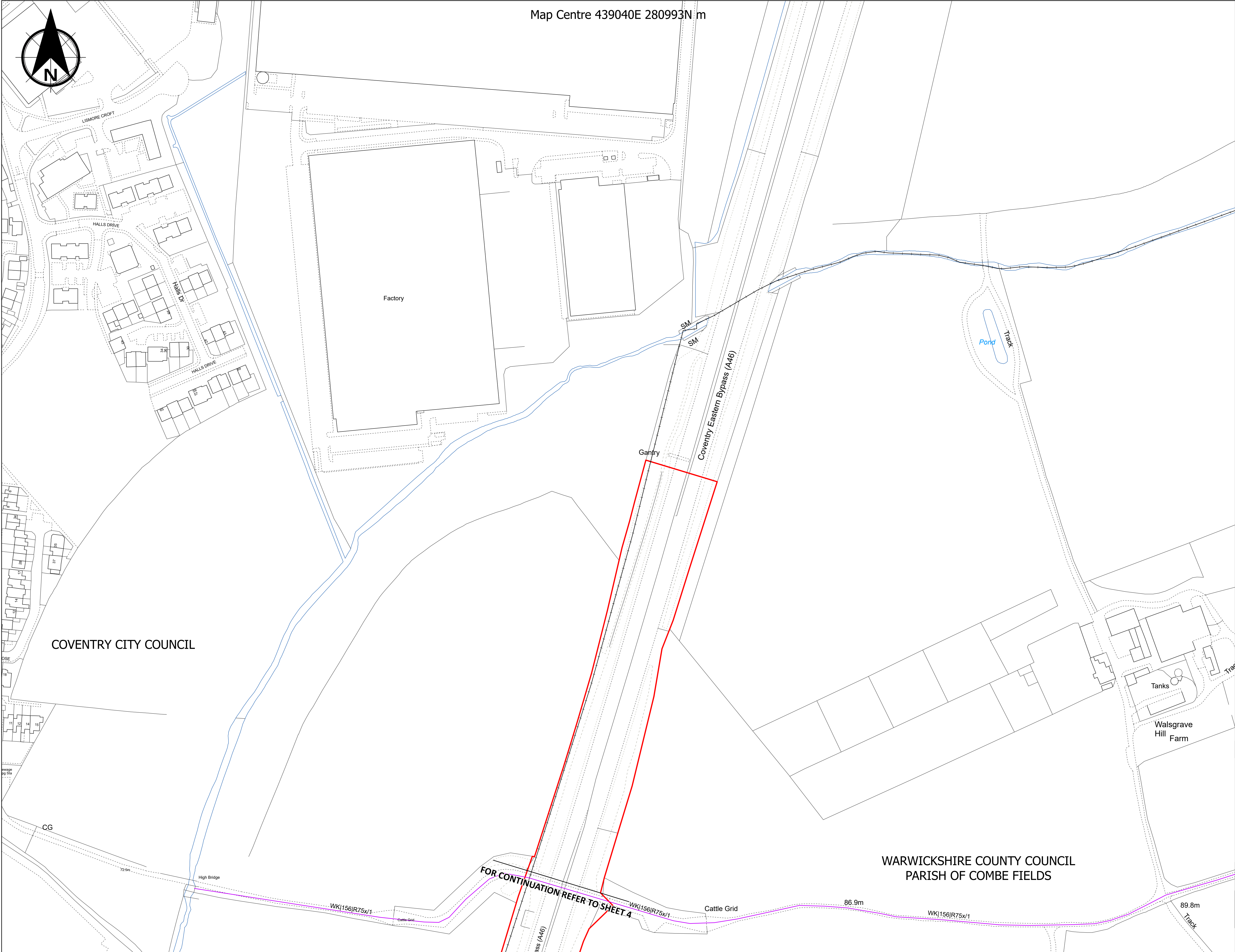
2. ALL EASEMENTS, SERVITUDES AND PRIVATE RIGHTS ARE PROPOSED TO BE EXTINGUISHED ON LAND, COLOURED PINK ON THESE LAND PLANS UNLESS STATED OTHERWISE IN THE BOOK OF REFERENCE. ALL EASEMENTS, SERVITUDES AND PRIVATE RIGHTS ARE PROPOSED TO BE EXTINGUISHED, SO FAR AS THEIR CONTINUED EXERCISE WOULD BE INCONSISTENT WITH THE EXERCISE OF THE RIGHTS AND RESTRICTIONS PROPOSED TO BE ACQUIRED BY THE UNDERTAKER ON LAND COLOURED BLUE ON THESE LAND PLANS UNLESS STATED OTHERWISE IN THE BOOK OF REFERENCE. ALL EASEMENTS, SERVITUDES AND PRIVATE RIGHTS ARE PROPOSED TO BE SUSPENDED WHILE THE UNDERTAKER IS IN TEMPORARY POSSESSION OF THE LAND COLOURED GREEN ON THESE LAND PLANS UNLESS STATED OTHERWISE IN THE BOOK OF REFERENCE.

3. THIS DRAWING IS TO BE READ IN CONJUNCTION WITH ALL OTHER PLANS AND DOCUMENTATION, IN PARTICULAR THE WORKS PLANS AND THE BOOK OF REFERENCE.

Legend

- DRAFT ORDER LIMITS
- EXISTING PUBLIC RIGHTS OF WAY (ENGLAND)
- PLOT REFERENCE NUMBER
- LOCAL AUTHORITY BOUNDARY

Revision 1	By SC	LE	08/11/2024	P01
Revision Details	By	Check	Date	Suffix
Purpose of Issue: DCO APPLICATION				
Client: National Highways 				
Development Consent Order Number: TR010066				
Project Title: A46 COVENTRY JUNCTIONS (WALSGRAVE)				
Development Consent Order Drawing Number: TR010066/APP/2.8				
Drawing Title: SPECIAL CATEGORY LAND PLANS REGULATION 5(2)(i) SHEET 4 OF 5				
Designed: --	Drawn: SC	Checked: LE	Date: 08/11/2024	
Internal Project Number: J0072785-24-04b		Suitability: DCO Application		
Scale @ A3: 1:1,250		Zone: Whole Site		
		Rev: P01		



Map Centre 439040E 280993N m

NOTES:

1. ALL DIMENSIONS ARE IN METRES UNLESS STATED OTHERWISE.

2. ALL EASEMENTS, SERVITUDES AND PRIVATE RIGHTS ARE PROPOSED TO BE EXTINGUISHED ON LAND, COLOURED PINK ON THESE LAND PLANS UNLESS STATED OTHERWISE IN THE BOOK OF REFERENCE. ALL EASEMENTS, SERVITUDES AND PRIVATE RIGHTS ARE PROPOSED TO BE EXTINGUISHED, SO FAR AS THEIR CONTINUED EXERCISE WOULD BE INCONSISTENT WITH THE EXERCISE OF THE RIGHTS AND RESTRICTIONS PROPOSED TO BE ACQUIRED BY THE UNDERTAKER ON LAND COLOURED BLUE ON THESE LAND PLANS UNLESS STATED OTHERWISE IN THE BOOK OF REFERENCE. ALL EASEMENTS, SERVITUDES AND PRIVATE RIGHTS ARE PROPOSED TO BE SUSPENDED WHILE THE UNDERTAKER IS IN TEMPORARY POSSESSION OF THE LAND COLOURED GREEN ON THESE LAND PLANS UNLESS STATED OTHERWISE IN THE BOOK OF REFERENCE.

3. THIS DRAWING IS TO BE READ IN CONJUNCTION WITH ALL OTHER PLANS AND DOCUMENTATION, IN PARTICULAR THE WORKS PLANS AND THE BOOK OF REFERENCE.

Legend

- DRAFT ORDER LIMITS
- EXISTING PUBLIC RIGHTS OF WAY (ENGLAND)
- PLOT REFERENCE NUMBER
- LOCAL AUTHORITY BOUNDARY

COVENTRY CITY COUNCIL

WARWICKSHIRE COUNTY COUNCIL
PARISH OF COMBE FIELDS

Revision 1		By SC	LE	08/11/2024	P01
Revision Details		By	Check	Date	Suffix
Purpose of Issue: DCO APPLICATION					
Client: National Highways 					
Development Consent Order Number: TR010066					
Project Title: A46 COVENTRY JUNCTIONS (WALSGRAVE)					
Development Consent Order Drawing Number: TR010066/APP/2.8					
Drawing Title: SPECIAL CATEGORY LAND PLANS REGULATION 5(2)(i) SHEET 5 OF 5					
Designed: --	Drawn: SC	Checked: LE	Date: 08/11/2024		
Internal Project Number: J0072785-24-05d		Suitability: DCO Application			
Scale @ A3: 1:1,250		Zone: Whole Site			
		Rev: P01			